


TECHNICAL SUPPORT MATERIAL

Preventative Maintenance

Instruction on 5CD Front Door Safety Latch Kit 088-1097



 **CAUTION** The original door handle lifts the door at the upper stop but can drop free if held by a rack or dishware article, if the rack is pushed in by hand, the door can fall on the hand once the rack is clear. The door latch is designed to prevent the inadvertent use of hands to place the rack after the arm has moved down.



To lift the door, pull the arm upward



The slider will move passed the latch plate



Slider moves above the latch plate



Pulling the door handle down, stops on the latch



To pull the handle down fully, lift the safety latch up



The slider will now clear the plate and slide passed



Continue to pull the arm down until the slider reaches the bottom of the rod.



THE ORIGINAL MODEL 5CD FRONT DOOR CLOSURE



CAUTION

The risk of injury comes from not pushing the rack fully inside the machine, while pulling the arm down. Mistakenly trying to push the rack in with the hands allows the door to drop down suddenly. This can cause injury to the hand.



Rack is not pushed all the way into the machine



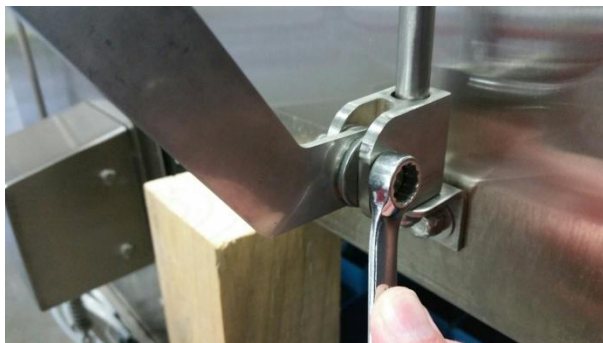
Pushing the rack with the hand allows the door to drop



Dropping of the door on the hand or fingers can cause pain and crush injury.

INSTRUCTIONS FOR INSTALLING THE 5CD FRONT DOOR SAFETY LATCH

The update kit (#088-1097) will consist of the front door with closure hardware attached and instruction decal applied to the door with the door stop parts separate.



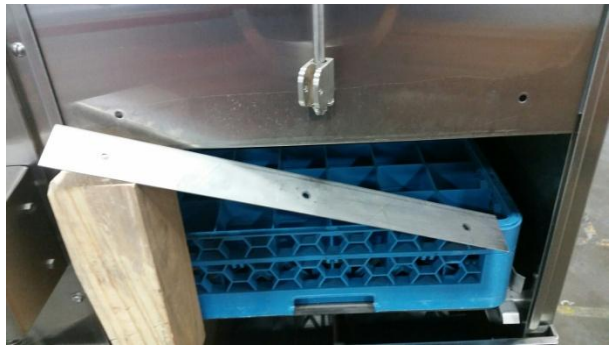
Remove the original front door by blocking the door open, then remove the 1/4"-20 bolt and locknut (098-1428 & 098-2507) from the slider block (084-6242)



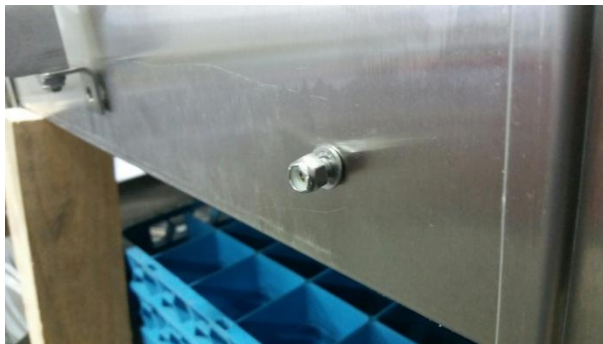
Remove the 2 bolts that hold the door stop and lower rod mount, then remove original front door.



Place the update Safety Latch Door w/hardware.



Install the door stop and secure rod lower mount bolt



Showing the bolt placement and direction of the door stop mounting



Tighten all bolts on the door stop. Insert the bushing (084-6703 and washers (098-2711) on the link (086-6729). The new update does not use the rubber bumpers (089-6613) on the slide rod.



Tighten the slider block bolt attaching the link. Slide the door up and down making sure the latch must be lifted in order to fully close the door arm.

Kit 088-1097, 5CD Door Safety Latch

2 each	084-6110	Detent Roller
1 each	084-6241	Door Slide Rod
1 each	084-6242	Door Slide
2 each	084-6628	Mounting Blocks
1 each	084-6703	3/8" Bushing Dowel
1 each	085-6436	Door Safety Latch Plate Weldment
1 each	086-6338	Square Washer
2 each	086-6732	Door Slide Rod Bracket
1 each	086-6733	Door Stop
1 each	087-6124	Front Door (with (2) strips (083-6108)
1 each	087-6704	Door Brace
1 each	089-9462	Decal, Door Safety Latch
4 each	098-1418	¼-20 x 1" SS TH Screw
2 each	098-1423	¼-20 x ½" SS HH Bolt
1 each	098-1428	¼-20 x 1 1/8" SS HH Bolt
2 each	098-1448	¼-20 x 1 ½" SS Pan Head Screw
2 each	098-1517	5/16-18 x ¾" SS TH Screw
10each	098-2416	¼" SS Washer
2 each	098-2501	5/16-18 Locknut
9 each	098-2507	¼-20 Locknut
1 each	098-2509	5/16" SS Washer
2 each	098-2708	3/8-16 Locknut
2 each	098-2711	3/8" ID SS Washer

ADS TECHNICAL SUPPORT

5CD Corner Double

